

The fourth dimension for your structure!

Benefit from our know-how in the field of light architecture

Illumination is naturally also technology. In its purest form, however, it is much more. Namely art. Or, to put it better: a real philosophy, because with light, you can take your building into a completely new dimension.

That is what makes perfect illumination an ideal image tool. Present your building or structure in the right light. You can see for yourself how that looks in Paris, for example, where we illuminated a famous tower by a certain Gustave Eiffel, or in St. Petersburg, where the TV Tower and Trinity Bridge (Troitskiy-Most) are lit up by 9,500 Pfannenberg flashing lights.



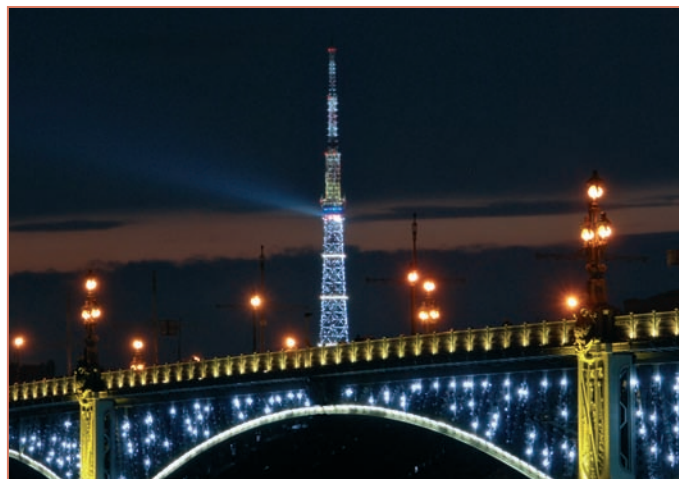
A completely different side of Pfannenberg: art illumination.

The beauty of the application and the durability and sturdiness of Pfannenberg flashing lights are the driving forces here. Let yourself be captivated by a few selected examples of Pfannenberg's artistic side.

Quadro R-ST

In June 2008, St. Petersburg became the scene of a fantastic art illumination installation. The TV Tower and the Trinity Bridge were illuminated as part of the International Economic Forum.

The project, which was based on the unique illumination of the Eiffel Tower in Paris, was carried out by a local company under the auspices of the city authorities. 9,500 Pfannenberg Quadro R-ST flashing lights were used for the project, selected because of their sturdy design that guarantees a long service life under adverse conditions.



*St. Petersburg, Russia
TV Tower and Trinity Bridge*

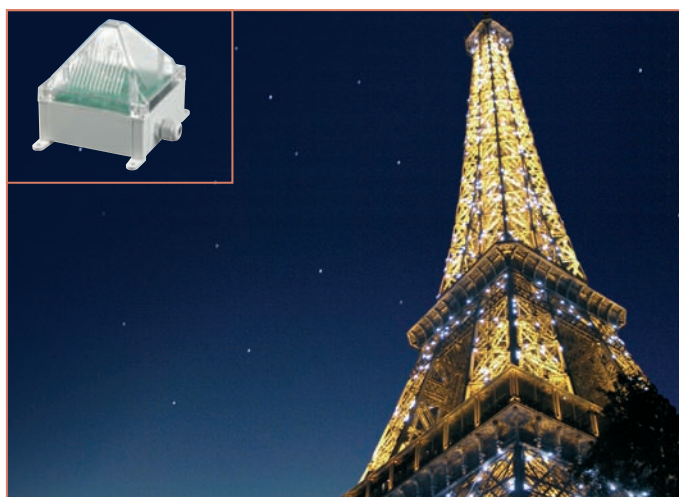


Quadro R

Pfannenberg put the Eiffel Tower back in the spotlight on 21 June 2003. Millions of people all over the world have admired the flashing lights that illuminate one of the most famous landmarks in the world.

20,000 flashing lights, specially manufactured by Pfannenberg GmbH, were installed by experienced mountaineers in order to light up the Eiffel Tower.

Each light has a service life of at least 10 years and can light up over 10 million times during that time. Thanks to their special design, they withstand summer and winter, storm and hail and illuminate the Eiffel Tower daily between 7 pm and midnight every hour on the hour for 10 minutes, as well as on special occasions.



*Paris, France
Eiffel Tower*

Do you require further information?

Just call us about any project: your ideas and our experience are sure to lead to great success!

Global Product Management: +49 40 73412-226 or -223

PSL 060

At the Expo 2000, the façade of the French Pavilion was turned into a spectacular eye-catcher. Etienne Jules Meray's photo 'The Walking Man', taken in 1880, was recreated as a large, moving light construction in keeping with the exhibition's slogan: 'Transport, Mobility and Movement'.

The 26 steps of the movement were illuminated in quick succession by Pfannenberg flashing lights. Like in a film, the lights ran along the 100 metre long walkway in 2 seconds and brought the man to life, day and night.



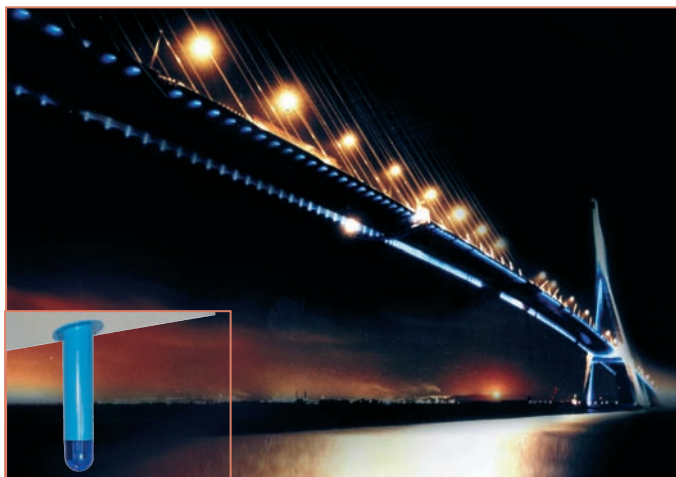
*Hanover, Germany
Expo 2000*

AB-PN

Pfannenberg's extremely bright and extremely strong flashing lights were used to illuminate the Pont de Normandie.

The frequencies of the flashing lights can be programmed in various stages and the light sequences adjust themselves to the level of traffic on the bridge: a lot of traffic – fast sequences, little traffic – slow sequences.

Due to the varying light sequences, the light installation has become a real attraction that draws in and captivates tourists.



*Le Havre - Honfleur, France
Pont de Normandie*

Quadro R-ST

In honour of the Sino-European Economic Conference in Hamburg in 2004, the organisers wanted to create a special accent and had the Council House lit up in blue. As the icing on the cake, the tower was lit by Pfannenberg Eiffel Tower flashing lights, thus captivating the observers with the famous Champagne sparkle.

Many citizens and visitors described the project, which could be seen from afar, as innovative and, as the light artist Michael Batz, who arranged the lights, said: "on a par with large cities such as Paris or New York".



*Hamburg, Germany
Council House*

Flashing Lights 10 Joule Quadro R / Quadro R-ST / Quadro A-DMX



Quadro R

- art illumination inside and outside buildings, even under the toughest of conditions
- with instant sparkling effect

Quadro R-ST (additional)

- equipped with industrial plug connectors for simple mounting
- one plug connector each for input and output, thus the devices can be connected in a row

Quadro A-DMX

- DMX-Controller for the individual controlling of each individual light in the system by means of a DMX-Bus system
- can be directly controlled by means of the standard DMX-Master
- rugged plug connectors for power supply and DMX-Bus (inlet and outlet)



Protection system



Protection system



Impact-proof housing



Operating temperature



Operating temperature (Quadro A-DMX)



Quadro A-DMX

Electrical data	Quadro R	Quadro R-ST	Quadro A-DMX
Rated voltage	230 V AC	230 V AC	230 V AC
Rated frequency	50 Hz / 60 Hz	50 Hz / 60 Hz	50 Hz / 60 Hz
Operating range	195 V – 253 V	195 V – 253 V	195 V – 253 V
Nominal current consumption	85 mA	85 mA	280 mA @ 1 Hz
Initial current limited to			< 1 A

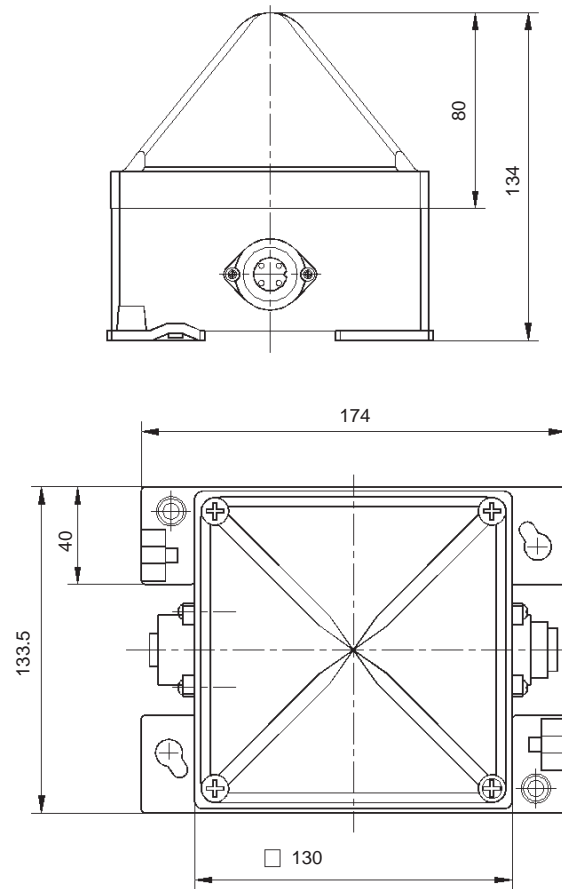
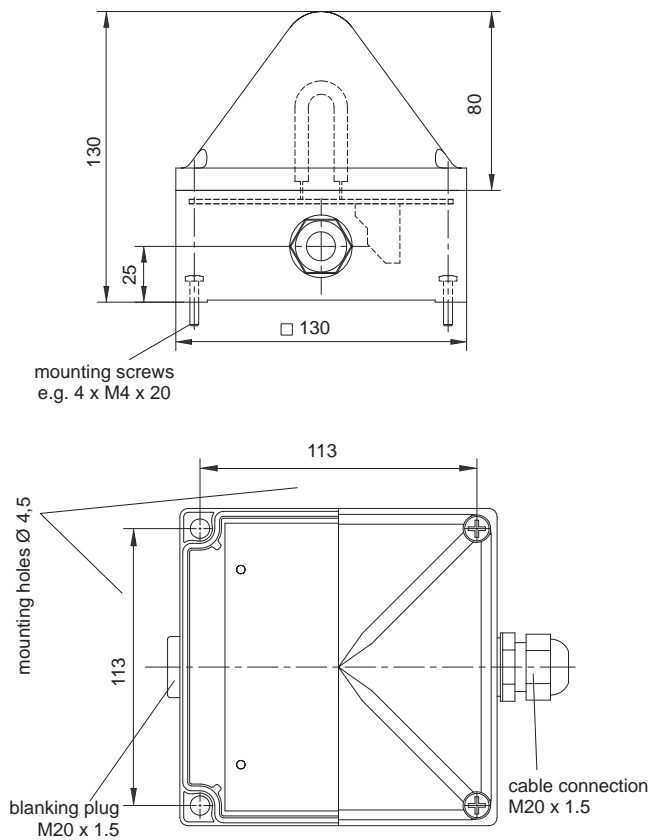
Mechanical data	Quadro R	Quadro R-ST	Quadro A-DMX
Flash rate	22 – 28 flashes/min.		≤ 2 Hz
Flash energy	10 J		
Light intensity (DIN 5037) ¹	124 cd		
Lens colours	clear, white, yellow, amber, red, green, blue		
Operating temperature	- 40 °C ... + 55 °C		- 30 °C ... + 60 °C
Storage temperature	- 40 °C ... + 70 °C		
Relative humidity	100%		
Protection system according to EN 60529	IP 66, IP 67, mounting arbitrary		
Impact resistance as per EN 50102	IK 08		
Protection class	II		
Duty cycle	100%		
Service life of the flash tube	light emission still 70% after 10 000 000 flashes		
Material	lens	polycarbonate (PC)	
	housing	polycarbonate (PC), RAL 7035	
Type of connection	screw clamps 2.5 mm ²	2 x plug connectors (input/output)	2 x plug connectors for operation voltage 2 x plug connectors for Bus-connection
Cable entry	2 x M20		
Mounting	external lugs	113 x 153 mm – M5 or 127.1 x 127.1 mm – M5	
	internal holes	113 x 113 mm	
Weight	600 g		

¹ with a clear lens

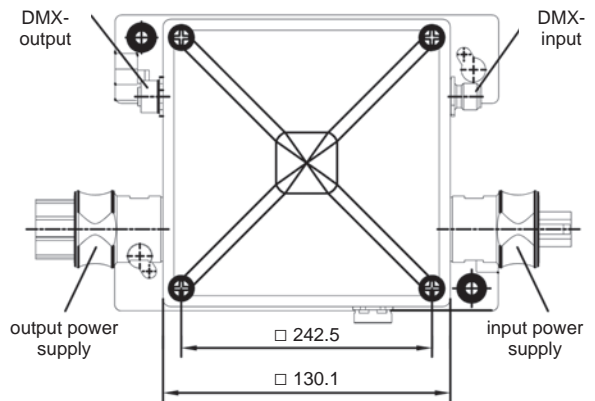
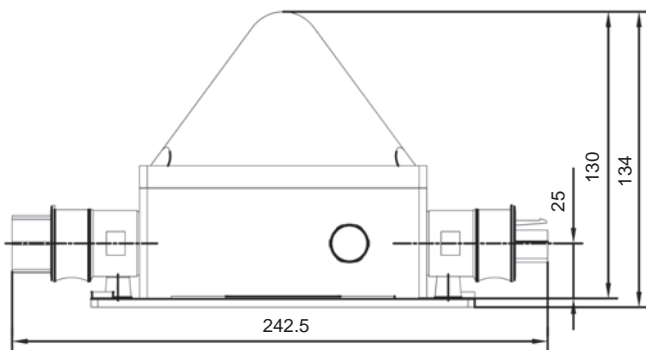
Dimensions

Quadro R

Quadro R-ST



Quadro A-DMX



Ordering details

Article numbers		Quadro R	Quadro R-ST	Quadro A-DMX
Haubenfarbe	Rated voltage	230 V AC	230 V AC	230 V AC
clear		291 23 10 1 005	291 24 10 1 000	291 25 10 1 000

Article numbers for other colours on request

Options / Accessories



Custom solutions

Customer-specific solutions are another of Pfannenberg's specialties.



WBQ-SG

Integrated sounder/flashing light combinations is a sturdy aluminium housing to protect against extreme mechanical stress, developed for the German navy.



PL 105 Accu

Fire signal in the safety tunnel alongside the Kitzsteinhorn railway; integrated 60 minute battery buffer.



LWL M-AS-i

Laser function display as per IEC 60825-1 with integrated function monitoring, redundant LED equipment and AS-i control in machine-specific design.



BR 35 Silver

Special high-gloss surface coating in customer-specific machine design.

Do you require further information?

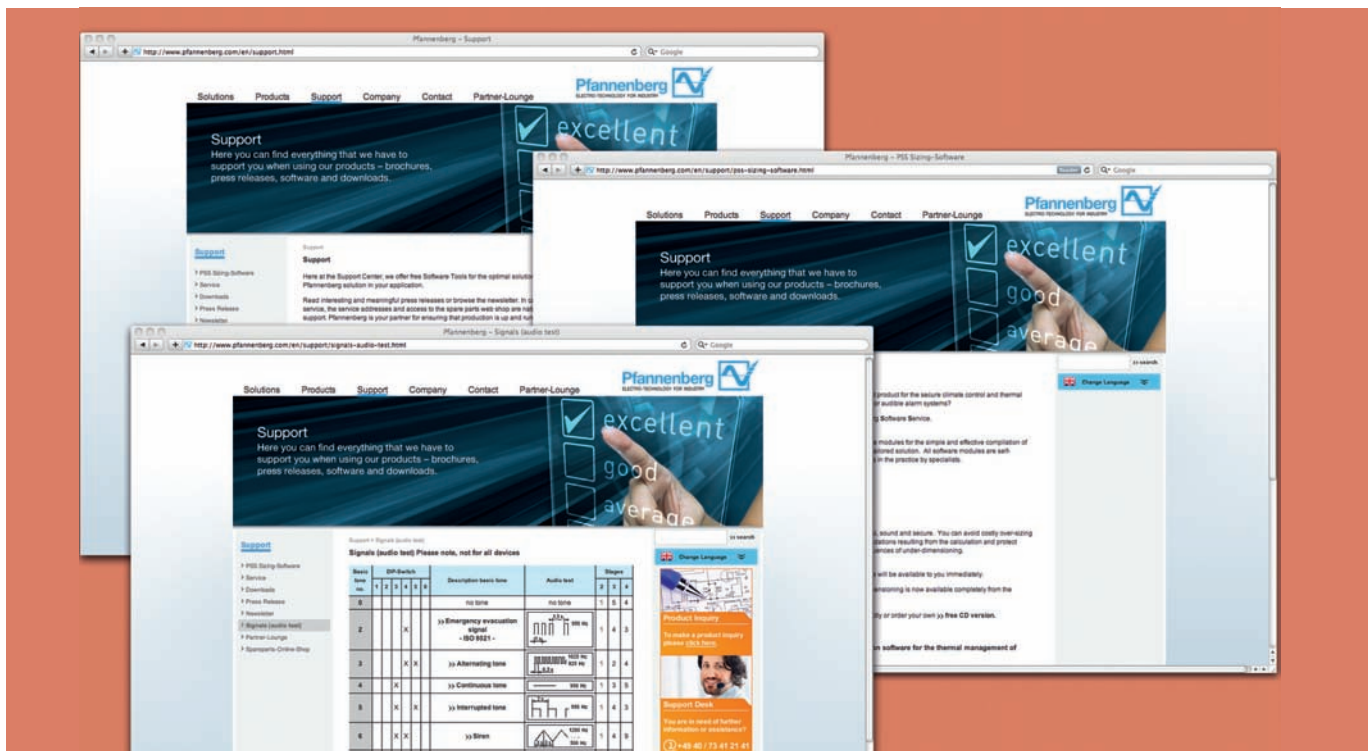
Just call us. We look forward to hearing about your requirements!

Global Product Management: +49 40 73412-226 or -223

Pfannenberg Software Service: PSS Signaling technology

On the Pfannenberg homepage you will find valuable, free software tools that are sure to assist you efficiently in solving your signaling tasks: www.pfannenberg.com/support

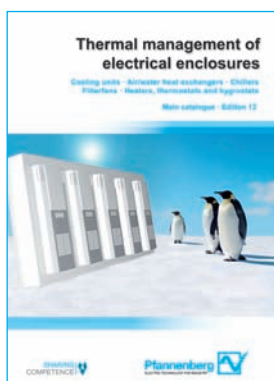
- Sizing of audible signaling devices for required distances (coverage)
- Calculation of audible signaling device coverage
- Calculation of set up requirements (distances) for audible alarms networks
- Audio samples of all standard tones



Pfannenberg: Signaling technology and thermal management

You can also benefit from Pfannenberg's long-standing competence in the field of control cabinet air conditioning and equipment. You too will be convinced by our economical solutions.

We look forward to your call or just send an email to: info@pfannenberg.com.
Order your 'thermal management' catalogue today.



- Cooling units
- Air/water heat exchangers
- Chillers
- Filterfans
- Heaters, thermostats and hygrostats



+ 49 40 734 12-0