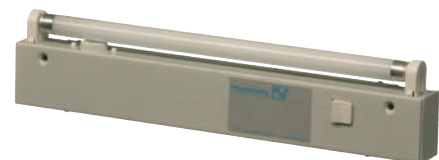


## Special Lamp Systems PLS 015 SL



Data	PLS 015 SL					Unit
Article number	17315110010 <sup>1</sup>	17315110011	17315110001	17315110002	17315110003	
Rated voltage ± 10 %	230 V 50 / 60 Hz (US: 120 V 60 Hz)					
Current consumption	0.29 (US: 0.38)					A
Fluorescent tubes	15					W
Tube type	T8					
Light intensity	720					Lm
Duty cycle	8000					h
Operating temperature	- 10 ... + 45 (+ 14 ... + 113)					°C (°F)
Storage temperature	- 10 ... + 45 (+ 14 ... + 113)					
Installation location	variable					
System of protection	IP 20					
Protection class	I					
Housing colour	RAL 7035					
Certification	ENEC (KEMA)					
Weight	1.43	1.28	1.30	1.32	1.35	kg
Type of connection	cable (1.5 m)		GST 18/3 plug			
Additional connections	GST 18/3 socket			door contact	integrated door end switch	

## Special Lamp Systems PLS 008 SL



Data	PLS 008 SL					Unit
Article number	17308110010 <sup>1</sup>	17308110011	17308110001	17308110002	17308110003	
Rated voltage ± 10 %	230 V 50 / 60 Hz (US: 120 V 60 Hz)					
Current consumption	0.16 (US: 0.25)					A
Fluorescent tubes	8					W
Tube type	T5					
Light intensity	450					Lm
Duty cycle	8000					h
Operating temperature	- 10 ... + 45 (+ 14 ... + 113)					°C (°F)
Storage temperature	- 10 ... + 45 (+ 14 ... + 113)					
Installation location	variable					
System of protection	IP 20					
Protection class	I					
Housing colour	RAL 7035					
Certification	ENEC (KEMA)					
Weight	0.89	0.75	0.78	0.82		kg
Type of connection	cable (1.5 m)		GST 18/3 plug			
Additional connections	GST 18/3 socket			door contact	integrated door end switch	

<sup>1</sup> without socket GST 18/3